



# TERREBONNE PARISH CONSOLIDATED GOVERNMENT

P.O. BOX 2768 • HOUMA, LOUISIANA 70361  
985-868-5050 • WWW.TPCG.ORG



## Invitation to Bidders

Electronic bids will be received on **May 5, 2023** Terrebonne Parish Consolidated Government (TPCG) Purchasing Division submitted through Central Auction House (CAH). Bid submittals will be accepted until 2:00 P.M. CST at which time bids will be retrieved from the CAH site and read aloud in the TPCG Purchasing Division Conference Room at 301 Plant Road Houma, LA 70363.

Bid documents are posted on <http://www.centrauctionhouse.com/rfp.php?cid=65>. To view, download, receive bid notices by e-mail and submit a bid, you must register with CAH. For information about the electronic submittal process and registration fees, contact Bobby Callender with CAH at 225-810-4814.

### **Bid 23-WHSE-11 (Re-Bid) Purchase of New/Unused Transformers for Warehouse Inventory**

Specifications and bid documents are on file at the TPCG Purchasing Division, 301 Plant Road Houma, Louisiana 70363 and posted on the Terrebonne Parish web site at [http://www.tpcg.org/index.php?f=purchasing&p=bid\\_opportunities](http://www.tpcg.org/index.php?f=purchasing&p=bid_opportunities). Documents may be obtained for review by prospective bidders in the aforementioned manner; however, vendors/contractors must submit their bids electronically through CAH.

Please contact Robert Savoie, Electric Distribution Superintendent, at 985-873-6783 with regard to the specifications or Gina Bergeron, Procurement Specialist III at 985-580-7272 with regard to any clarifications or information about bid submittal requirements.

The Terrebonne Parish Consolidated Government (TPCG) reserves the right to reject any and all bids in accordance with Louisiana State Bid Law.

          /s/           Gordon E. Dove

Gordon E. Dove, Parish President  
Terrebonne Parish Consolidated Government

Publish: April 20<sup>th</sup> & 27<sup>th</sup>, 2023  
To Courier: April 18, 2023

## REQUIREMENTS AND INSTRUCTIONS FOR BIDDERS FOR

### Bid 23-WHSE-11 (Re-Bid) Purchase of New/Unused Transformers for Warehouse Inventory

#### Please Read Carefully

**GENERAL:** The Terrebonne Parish Consolidated Government (TPCG) is soliciting bids to establish prices for transformers for warehouse inventory. Delivery shall be made to the TPCG Warehouse Division located at 301 Plant Road, Houma, Louisiana 70363.

**INTERPRETATIONS AND ADDENDA:** All questions about the meaning or intent of the Bidding Documents are to be directed to Gina Bergeron, Procurement Specialist III as set forth herein. Interpretations, clarifications, or modifications considered necessary by Gina Bergeron, Procurement Specialist III in response to such questions will be issued by Addenda and posted to the CAH (<http://www.centralauctionhouse.com/rfp.php?cid=65>) site.

Bidders shall promptly notify Gina Bergeron, Procurement Specialist III at 985-580-7272 or via email at [gbergeron@tpcg.org](mailto:gbergeron@tpcg.org) of any ambiguity, inconsistency, or error that may be discovered upon examination of the Bidding Documents. Bidders requiring clarification or interpretation of any of the Bidding Documents shall make a written request to Gina Bergeron, Procurement Specialist III at the aforementioned email address.

All requests pertaining to questions about the meaning or intent of the Bidding Documents received less than seven days prior to the date for opening of Bids may not be answered unless, in the opinion of Gina Bergeron, Procurement Specialist III, the ambiguity in the Bidding Documents is so significant that it may necessitate postponement of the Bid date and issuance of an addendum to respond to the Bidder's request.

Any interpretation, clarification, correction, or modification to the Bidding Documents shall be only by a written addendum and posted to the CAH site. Interpretations, clarifications, corrections or modifications made by any other manner shall not be binding and shall not be relied upon by Bidders. Addenda shall be transmitted in accordance with Louisiana Bid Law.

Addenda may also be issued to modify the Bidding Documents as deemed advisable by OWNER. **Prior to submittal of bids, each Bidder shall ascertain that he has received all addenda issued. Failure by a Bidder to acknowledge each individual addendum shall render that Bidder's Bid non-responsive.**

**SUBSTITUTE MATERIAL AND EQUIPMENT OR "OR EQUAL" ITEMS:** Any product or service bid shall conform to all applicable federal and state laws and regulations and the specifications contained in the solicitation.

Whenever materials or equipment are specified or described in the Bidding Documents by using the name of a certain brand, make, supplier, manufacturer, or definite specification; the naming or

specification of the item is only intended to denote the quality standard of the item desired and to convey and establish the general style, type, character and quality of material , equipment or product desired and does not restrict bidders to the specific brand, make, manufacturer, or specification named; and that equivalent products may be acceptable.

Bidder must specify the brand and model number of the product offered in his / her bid. Bids not specifying brand and model numbers shall be considered as offering the exact products specified in the solicitation.

**PREPARATION AND SUBMISSION OF BIDS:** Bids shall be electronically submitted to the CAH site by the time indicated in the Invitation to Bidders.

Bid pricing and product model/stock/part numbers shall be inserted in the proper fields provided on the CAH site. All accompanying documents must be uploaded to the site by the bid opening time and date herein.

**The following items must be uploaded as an attachment with each bid:**

- Completed Official Bid Form Section “A”
- Official Bid Form Section “B” with delivery times inserted
- Signature Authorization – **(Required by All Bidders) Written evidence of the person signing the bid shall be provided at the time of bidding, in accordance with LA R.S. 38:2212(B)(5) as follows:**

(a) The signature on the bid is that of any corporate officer listed on the most current annual report on file with the secretary of state, or the signature on the bid is that of any member of a partnership, limited liability company, limited liability partnership, or other legal entity listed in the most current business records on file with the secretary of state.

(b) The signature on the bid is that of an authorized representative as documented by the legal entity certifying the authority of the person.

(c) The legal entity has filed in the appropriate records of the secretary of state of this state an affidavit, resolution, or other acknowledged or authentic document indicating the names of all parties authorized to submit bids for public contracts. Such document on file with the secretary of state shall remain in effect and shall be binding upon the principal until specifically rescinded and canceled from the records of the office.

**Failure to include the appropriate signature authorization shall result in rejection of the bid as non-responsive.**

**MODIFICATION AND WITHDRAWAL OF BIDS:** Modifications to bids, through bidder’s CAH account, can be made until the date and time of the bid opening. The Bidder must contact CAH for instructions for the withdrawal of a bid in its entirety prior to the time of the scheduled bid opening. Withdrawal of a Bid will not prejudice the rights of a Bidder to submit a new Bid prior to the Bid Date and Time. After

expiration of the period for receiving Bids, no Bid may be withdrawn, modified, or explained except as provided for herein.

In accordance with Louisiana law, more particularly, R.S. 38:2214, as may be amended, bids containing patently obvious, unintentional, and substantial mechanical and clerical, or mathematical errors, or errors of unintentional omission of a substantial quantity of work, labor, material, or services made directly in the compilation of the bid, may be withdrawn by the bidder if clear and convincing sworn, written evidence of such errors is furnished to the OWNER within 48 hours of the bid opening excluding Saturdays, Sundays and legal holidays.

Such errors must be clearly shown by objective evidence drawn from inspection work papers, documents or materials used in the preparation of the bid sought to be withdrawn. If the OWNER determines that the error is a patently obvious mechanical, clerical or mathematical error, or unintentional omission of a substantial quantity of work, labor, material or services as opposed to a judgment error, and that the bid was submitted in good faith, it shall accept the withdrawal and return the bid security (when applicable) to the bidder. A bidder who attempts to withdraw a bid under these provisions of this section shall not be allowed to re-submit a bid on the contract. Any modifications or amendments to the above stated applicable State law shall supersede this procedure.

A bidder may alter or correct an entry on the bid form Section "A" by crossing out the entry, and initialing on the line of change. Any ambiguity arising from entries altered or corrected on the Bid Form will cause the rejection of said Bid as non-responsive.

**OPENING OF BIDS:** All Bids received prior to the announced closing time for the receipt of Bids stipulated in the Invitation to Bidder will be opened publicly. Bids will be read aloud and a tabulation of the amounts of the Base Bids and alternates (if any) will be made available to Bidders after the opening of Bids.

Any uncertainty as to whether a Bid was submitted in time will be resolved against the Bidder.

**BIDS TO REMAIN OPEN:** The OWNER shall act not later than forty-five (45) calendar days after the date of opening Bids to award such contract to the lowest responsible and responsive bidder or to reject all bids.

The OWNER and the lowest responsible and responsive bidder, by mutually written consent, may agree to extend the deadline for award by one (1) or more extensions of thirty (30) calendar days.

**AWARD OF CONTRACT:** To the extent permitted by applicable local, state and federal laws and regulations, OWNER reserves the right to reject any and all Bids for just cause. The Terrebonne Parish Consolidated Government reserves the right to reject any and all bids in accordance with Louisiana State Bid Law.

In order to be responsive, the apparent low bidder must submit the additional information and documentation required by the OWNER within the time delays established by law.

**CONTRACT TERM:** N/A

**PRICES:** Unless otherwise specified by TPCG in the solicitation, bid prices must be complete including transportation prepaid by bidder to destination and firm for acceptance for a minimum of 45 days. Bids other than F.O.B. Destination may be rejected. Prices must be firm, and any shipping/freight charges shall be included in unity pricing.

**NO GUARANTEE OF QUANTITIES:** The quantities referenced are estimated. In the event a greater or lesser quantity is needed, the TPCG reserves the right to increase or decrease the amount, at the unit price stated in the bid. The TPCG does not obligate itself to contract for or accept more than their actual requirements as determined by a department/division needs and availability of appropriated funds.

**DELIVERY:** TPCG desires delivery at the earliest possible date. It is imperative that the material is delivered within the time frame(s) stipulated on Section "B" of the Official Bid Form.

**NEW PRODUCTS:** Unless specifically called for in the solicitation, all products for purchase shall be new, never previously used, and the current model and/or packaging. No remanufactured, demonstrator, used or irregular products will be considered for purchase unless otherwise specified in the solicitation. The manufacturer's standard warranty will apply unless otherwise specified in the solicitation.

**CONTRACT CANCELLATION:** The TPCG has the right to cancel any contract for cause, including but not limited to, the following: failure to deliver within the time specified in the contract; failure of the product or service to meet specifications, conform to sample quality or to be delivered in good condition; misrepresentation by the contractor; fraud, collusion, conspiracy or other unlawful means of obtaining any contract with the TPCG; conflict of contract provisions with constitutional or statutory provisions of state or federal law; any other breach of contract.

**TERMINATION OF CONTRACT FOR CAUSE:** The TPCG has the right to cancel any contract for cause by execution of a written notice prior to the end of the contractual period indicated for infractions including but not limited to the following: failure to deliver within the time specified; failure to meet specifications herein, failure to conform to sample quality, pricing excessively high or out of line with other Contractors, misrepresentation by the contractor, fraud, collusion, conspiracy, unlawful means of obtaining the contract, conflict constitutional or statutory provisions of state or federal law and any other breach of contract. The Contractor shall be entitled to payment for deliverable in progress to the extent that work has been performed satisfactorily.

**TERMINATION FOR CONVENIENCE:** The TPCG shall have the right to terminate the contract without cause and at its convenience, with no notice to the contractor.

**TERMINATION FOR NON-APPROPRIATION OF FUNDS:** Notwithstanding any provision herein, in the event sufficient funds for the performance of this Agreement are not appropriated by TPCG in any fiscal year covered by this contract, this agreement may be terminated by the TPCG giving notice to the Contractor of such facts and the TPCG's intention to terminate its financial obligation.

**DEFAULT OF VENDOR:** Failure to deliver the services within the time specified in the bid will constitute a default and may cause cancellation of the contract. Where the TPCG has determined the Vendor to be in default, the TPCG reserves the right to purchase any and/or all products or services covered by the contract on the open market and to charge the Vendor with cost in excess of the contract price (liquidated damages). Until such assessed charges have been paid, no subsequent bid from the defaulting Vendor will be considered.

**NON-COLLUSION AFFIDAVIT-** In accordance with La. R.S. 38:2224, successful bidders must submit a fully executed Non-Collusion Affidavit within ten (10) days of receipt of Notice of Award.

**AFFIDAVIT VERIFICATION OF CITIZENSHIP** - bidders shall comply with the provisions of LA R.S. 38:2212.10 and federal law pertaining to E-verify

**APPLICABLE LAW:** All contracts shall be construed in accordance with and governed by the laws of the State of Louisiana.

**CLAIMS OR CONTROVERSIES:** The venue of any suit filed in connection with any claim shall be the Thirty-Second Judicial Court, Parish of Terrebonne, State of Louisiana.

**BYRD ANTI-LOBBYING AMENDMENT:** Contractors who apply or bid for an award of \$100,000 or more shall file the required certification. Each tier certifies to the tier above that it will not and has not used Federal appropriated funds to pay any person or organization for influencing or attempting to influence an officer or employee of any agency, a Member of Congress, officer or employee of Congress, or an employee of a Member of Congress in connection with obtaining any Federal contract, grant, or any other award covered by 31 U.S.C. § 1352. Each tier shall also disclose any lobbying with non-Federal funds that takes place in connection with obtaining any Federal award. Such disclosures are forwarded from tier to tier up to the recipient who in turn will forward the certification(s) to the awarding agency. Contractors must sign and submit to the non-federal entity the Certification Regarding Lobbying Form, which is attached hereto.

**SPECIAL ACCOMMODATION:** Any “qualified individual with a disability” as defined by the Americans with Disabilities Act who has submitted a bid and desires to attend the bid opening, must notify this office in writing no later than seven (7) days prior to the bid opening date of the need for special accommodations. If the request cannot be reasonably provided, the individual will be informed prior to the bid opening.

**COMPLIANCE WITH CIVIL RIGHTS:** By submitting and signing this bid, Bidder agrees to abide by the requirements of the following as applicable: Title VI and VII of the Civil Rights Act of 1964, as amended, The Veterans Readjustment Assistance Act of 1974, Title IX of the Education Amendments of 1972, The Age Act of 1975, and Bidder agrees to abide by the requirements of the Americans with Disabilities Act of 1990. Bidder agrees not to discriminate in its employment practices and will render services under any contract enter into as a result of this solicitation without regard to race, color, religion, national origin, veteran status, political affiliation, or disabilities. Any act of discrimination committed by Bidder

or failure to comply with these statutory obligations when applicable, shall be grounds for termination of any contract entered into as a result of this solicitation.

**SAFETY DATA SHEETS:** All applicable chemicals, herbicides, pesticides, and hazardous materials must be registered for sale in Louisiana by the Department of Agriculture, State of Louisiana, registered with EPA and must meet all requirements of Louisiana State Laws. Bidders must submit product label, material safety data sheet and EPA registry number with the delivery of each applicable product. This information will be required on any subsequent deliveries if there is a change in chemical content or a different product is being supplied. Failure to submit this data may cause the contract to be cancelled.

**CLEAN AIR ACT:** Bidder acknowledges that the Clean Air Act (CAA) is the comprehensive federal law regulating air emissions from stationary and mobile sources. Among other things, this law authorizes EPA to establish National Ambient Air Quality Standards (NAAQS) to protect public health and public welfare and to regulate emissions of hazardous air pollutants.

**ENERGY CONSERVATION:** The contractor agrees to comply with mandatory standards and policies relating to energy efficiency, which are contained in the state energy conservation plan issued in compliance with the Energy Policy and Conservation Act.

**FEDERAL WATER POLLUTION CONTROL ACT:** Bidder acknowledges that the Federal Water Pollution Control Act, popularly known as the Clean Water Act, is a comprehensive law aimed at restoring and maintaining the chemical, physical and biological integrity of the nation's waters. The Act authorizes water quality programs, requires federal effluent limitations and state water quality standards, requires permits for the discharge of pollutants into navigable waters, provides enforcement mechanisms, and authorizes funding for wastewater treatment construction grants and state revolving loan programs, as well as funding to states and tribes for their water quality programs.

**PROCUREMENT OF RECOVERED MATERIALS:** In the performance of this contract, the Contractor shall make maximum use of products containing recovered materials that are EPA-designated items unless the product cannot be acquired:

1. Competitively within a timeframe providing for compliance with the contract performance schedule;
2. Meeting contract performance requirements; or
3. At a reasonable price.

Information about this requirement, along with the list of EPA- designated items, is available at EPA's Comprehensive Procurement Guidelines web site, <https://www.epa.gov/smm/comprehensive-procurement-guideline-cpg-program>.

The Contractor also agrees to comply with all other applicable requirements of Section 6002 of the Solid Waste Disposal Act.”

**ACCESS TO RECORDS:** The Contractor agrees to provide TPCG, the FEMA Administrator, the Comptroller General of the United States, or any of their authorized representatives access to any books, documents, papers, and records of the Contractor which are directly pertinent to this contract for the purposes of making audits, examinations, excerpts, and transcriptions.

The Contractor agrees to permit any of the foregoing parties to reproduce by any means whatsoever or to copy excerpts and transcriptions as reasonably needed.

The Contractor agrees to provide the FEMA Administrator or his authorized representatives access to construction or other work sites pertaining to the work being completed under the contract.

In compliance with the Disaster Recovery Act of 2018, the TPCG and the Contractor acknowledge and agree that no language in this contract is intended to prohibit audits or internal reviews by the FEMA Administrator or the Comptroller General of the United States.

**DHS SEAL, LOGO, AND FLAGS:** The contractor shall not use the DHS seal(s), logos, crests, or reproductions of flags or likenesses of DHS agency officials without specific FEMA pre-approval.

**COMPLIANCE WITH FEDERAL LAW, REGULATIONS, AND EXECUTIVE ORDERS:** This is an acknowledgement that FEMA financial assistance will be used to fund all or a portion of the contract. The contractor will comply with all applicable Federal law, regulations, executive orders, FEMA policies, procedures, and directives.

**NO OBLIGATION BY FEDERAL GOVERNMENT:** The Federal Government is not a party to this contract and is not subject to any obligations or liabilities to the non-Federal entity, contractor, or any other party pertaining to any matter resulting from the contract. The Federal Government is not a party to this contract and is not subject to any obligations or liabilities to the non-Federal entity, contractor, or any other party pertaining to any matter resulting from the contract.

**PROGRAM FRAUD AND FALSE OR FRAUDULENT STATEMENTS OR RELATED ACTS:** The Contractor acknowledges that 31 U.S.C. Chap. 38 (Administrative Remedies for False Claims and Statements) applies to the Contractor's actions pertaining to this contract.

**TECHNICAL INFORMATION:** Literature and/or specifications providing complete technical information as required to certify that the product offered in the proposal is fully compliant with specifications herein **must be submitted upon request**; if requested, literature and/or specifications shall be submitted within seven (7) days. Such documentation shall include diagrams, books, brochures, photographs, or other means to verify compliance. Any change made to a manufacturer's published specifications submitted for a product shall be verifiable by the manufacturer.

**Failure to submit this information shall result in the bid being declared non-responsive and just cause for rejection.**



**VENDOR REGISTRATION:** The Terrebonne Parish Consolidated Government Purchasing Division requires vendors to register online at <https://secure.tpcg.org/vendor/> . This tool is part of our efforts to make it easier for you to do business with the Parish, as well as provide you with better business opportunities.

If you have already taken action to complete this requirement, you do not have to complete this process again. However, if you have not already registered online as a vendor you will need to do so within ten (10) day's notice of award of this bid.

**CERTIFICATE OF INSURANCE:** The successful bidder is required to submit an insurance certificate returned within ten (10) days from the date of the Notice of Award of the bid. All certificates must be approved by the TPCG Risk Manager to ensure that all insurance requirements have been met before a purchase order is issued. (Insurance requirements are set forth in "Terrebonne Parish Government's Insurance Requirements", attached hereto.) Failure of the successful bidder to comply with this requirement may result in the bid being declared non-responsive and cause for rejection.

**PURCHASE ORDER:** The successful bidder will be issued a purchase order for each applicable purchase when the bid has been awarded. The vendor must have submitted all required documents within the time specified and the company's insurance certificate must be approved by the TPCG Risk Management Department.

**PAYMENT STRUCTURE:** Vendor / Contractor shall submit invoices to Chantel Comardelle, Warehouse Supervisor, at 301 Plant Road Houma, Louisiana 70363 or email at [ccomardelle@tpcg.org](mailto:ccomardelle@tpcg.org). The invoice total shall not exceed the purchase order amount. Invoices must include the purchase order number and the name, address, and phone number of the vendor. No items other than those included in the bid shall be billed, and the unit prices shall prevail.

**Payment is to be made within thirty (30) days after receipt of properly executed invoice or delivery, whichever is later.**

**TAXES:** Vendor is responsible for including all applicable taxes in the bid price. TPCG is exempt from all state and local sales and use taxes.

**Special Instructions:**

- **Unit price bid should not exceed two (2) digits to the right of the decimal point. Unit price submitted beyond two (2) digits will be rounded off to the nearest second digit.**
- **Vendors are encouraged to bid in the correct unit of measures shown to be considered for award. Bids submitted in any other unit of measure may not be considered.**
- **When entering dollar amounts into the fields provided on CAH, do not use commas or dollar signs.**

**OFFICIAL BID FORM  
SECTION "A"**

**Bid 23-WHSE-11 (Re-Bid) Purchase of New/Unused Transformers for Warehouse Inventory**

**INDIVIDUAL AWARD:** It is the intent of the TPCG to award all items on an individual basis to the lowest responsive and responsible bidder for each item.

The undersigned bidder hereby declares and represents that she/he; a) has carefully examined and understands the Bidding Documents, b) has not received, relied on, or based his bid on any verbal instructions contrary to the Bidding Documents or any addenda, c) hereby proposes to provide the transformers as required, all in strict accordance with the Bidding Documents prepared by: TPCG Purchasing Division and dated April 2023.

**NAME OF BIDDER:** \_\_\_\_\_

**ADDRESS OF BIDDER:** \_\_\_\_\_  
\_\_\_\_\_

**NAME OF AUTHORIZED SIGNATORY BIDDER:** *(Printed or Typed)* \_\_\_\_\_

**SIGNATURE OF AUTHORIZED SIGNATORY BIDDER** \_\_\_\_\_

**TITLE OF AUTHORIZED SIGNATORY BIDDER:** \_\_\_\_\_

**DATE:** \_\_\_\_\_

**Signature Authorization. (Required By All Bidders) Written evidence of the person signing the bid SHALL be submitted at the time of bidding, in accordance with LA R.S. 38:2212(B)(5)**

**Non-Collusion Affidavit (Regarding LSA - R.S. 38:2224)**

**(To be submitted in within ten (10) days after receipt of Notice of Award)**

STATE OF LOUISIANA

BID NAME: Bid 23-WHSE-11 (Re-Bid) Transformers

PARISH OF TERREBONNE

LOCATION: 301 Plant Road Houma, LA 70363

**AFFIDAVIT**

Before me, the undersigned authority, duly commissioned and qualified within and for the State and Parish aforesaid, personally came and appeared \_\_\_\_\_ representing \_\_\_\_\_ who, being by me first duly sworn deposed and said that he has read this affidavit and does hereby agree under oath to comply with all provisions herein as follows:

Section 2224 of Part II of Chapter 10 of Title 38 of the Louisiana Revised Statutes, as amended.

- (1) That affiant employed no person, corporation, firm, association, or other organization, either directly or indirectly, to secure the public contract under which he received payment, other than persons regularly employed by the affiant whose services in connection with the construction, alteration or demolition of the public building or project or in securing the public contract were in the regular course of their duties for affiant; and
- (2) That no part of the Contract price received by affiant was paid or will be paid to any person, corporation, firm, association, or other organization for soliciting the Contract, other than the payment of their normal compensation to persons regularly employed by the affiant whose services in connection with the construction, alteration or demolition of the public building or project were in the regular course of their duties for affiant.

THUS DONE AND SIGNED BEFORE ME, THE UNDERSIGNED Notary Public and subscribing witnesses on this \_\_\_ day of \_\_\_\_\_, 20\_\_\_, at \_\_\_\_\_, Louisiana.

\_\_\_\_\_  
WITNESS

\_\_\_\_\_  
CONTRACTOR/VENDOR

\_\_\_\_\_  
WITNESS

\_\_\_\_\_  
NOTARY PUBLIC

**CERTIFICATION REGARDING LOBBYING**  
**(To be submitted in within ten (10) days after receipt of Notice of Award)**

The undersigned certifies, to the best of his or her knowledge and belief, that:

1. No Federal appropriated funds have been paid or will be paid, by or on behalf of the undersigned, to any person for influencing or attempting to influence an officer or employee of an agency, a Member of Congress, an officer or employee of Congress, or an employee of a Member of Congress in connection with the awarding of any Federal contract, the making of any Federal grant, the making of any Federal loan, the entering into of any cooperative agreement, and the extension, continuation, renewal, amendment, or modification of any Federal contract, grant, loan, or cooperative agreement.
2. If any funds other than Federal appropriated funds have been paid or will be paid to any person for influencing or attempting to influence an officer or employee of any agency, a Member of Congress, an officer or employee of Congress, or an employee of a Member of Congress in connection with this Federal contract, grant, loan, or cooperative agreement, the undersigned shall complete and submit Standard Form-LLL, "Disclosure Form to Report Lobbying," in accordance with its instructions.
3. The undersigned shall require that the language of this certification be included in the award documents for all subawards at all tiers (including subcontracts, subgrants, and contracts under grants, loans, and cooperative agreements) and that all subrecipients shall certify and disclose accordingly.

This certification is a material representation of fact upon which reliance was placed when this transaction was made or entered into. Submission of this certification is a prerequisite for making or entering into this transaction imposed by section 1352, title 31, U.S. Code. Any person who fails to file the required certification shall be subject to a civil penalty of not less than \$10,000 and not more than \$100,000 for each such failure.

The Contractor, \_\_\_\_\_, certifies or affirms the truthfulness and accuracy of each statement of its certification and disclosure, if any. In addition, the Contractor understands and agrees that the provisions of 31 U.S.C. Chap. 38, Administrative Remedies for False Claims and Statements, apply to this certification and disclosure, if any.

\_\_\_\_\_  
Signature of Contractor's Authorized Official

\_\_\_\_\_  
Name and Title of Contractor's Authorized Official

\_\_\_\_\_  
Date

**“D”**

TERREBONNE PARISH CONSOLIDATED GOVERNMENT  
MINIMUM, INSURANCE REQUIREMENTS FOR VENDOR  
(WITH GENERAL LIABILITY EXPOSURE ONLY)

Contractor shall procure and maintain for the duration of the contract insurance against claims for injuries to persons or damages to property, which may arise from or in connection with the performance of the work hereunder by the Contractor, his agents, representatives, employees or subcontractor. **The cost of such insurance shall be included in the bid** with, TPCG (Terrebonne Parish Consolidated Government).

A. MINIMUM SCOPE OF INSURANCE

Coverage shall be at least as broad as Insurance Services Office form number GL0002 (Ed. 1/73) covering Comprehensive General Liability and Insurance Services Office form number GL0404 covering Broad Form Comprehensive General Liability; or Insurance Services Office Commercial General Liability coverage (“occurrence form CG001). **“Claims Made” form is unaccepted. The “occurrence form” shall not have “sunset clause”.**

B. MINIMUM LIMITS OF INSURANCE

Contractor shall maintain limits no less than Commercial General Liability: \$500,000 combined single limit per occurrence for bodily injury, personal injury and property damage (or higher limits depending on size of contract).

C. DEDUCTIBLES AND SELF-INSURED RETENTIONS

ANY DEDUCTIBLES OR SELF-INSURED RETENTIONS MUST BE DECLARED TO AND APPROVED BY TPCG. At the option of TPCG, either: The insurer shall reduce or eliminate such deductibles or self-insured retentions as respects TPCG, its officers, officials, employees and volunteers; or the Contractor shall procure a bond guaranteeing payment of losses and related investigations, claim administration and defense expenses.

D. OTHER INSURANCE PROVISIONS

The policies are to contain, or be endorsed to contain, the following provisions:

1. General Liability

- a. TPCG, its officers, officials, employees, boards and Commissions and volunteers are to be added as **“additional insured”** as respects liability arising out of activities performed by or on behalf of the Contractor; products and completed operations of the Contractor premises owned, occupied or used by the Contractor. The coverage shall contain no special limitations on the scope of protection afforded to TPCG, its officers, officials, employees or volunteers.

- b. Any failure to comply with reporting provisions of the policy shall not affect coverage provided to TPCG, its officers, officials, employees, Boards and Commissions or volunteers.
- c. The Contractor's insurance shall apply separately to each insured against whom claim is made or suit if brought, except with respect to the limits of the insurer's liability.

2. All Coverage's

Each insurance policy required by this clause shall be endorsed to state that coverage shall not be suspended, voided, cancelled **thirty (30)** days prior written notice by certified mail, return receipt requested, has been given to TPCG.

E. ACCEPTABILITY OF INSURERS

Insurance is to be placed with insurers with an A.M. BEST'S RATING OF NO LESS THAN A:VI.

F. VERIFICATION OF COVERAGE

Contractor shall furnish TPCG with certificates of insurance effecting coverage required. The certificates for each insurance policy are to be signed by a person authorized by that insurer to bind coverage on its behalf. THE CERTIFICATES ARE TO BE RECEIVED AND APPROVED BY TPCG BEFORE WORK COMMENCES. TPCG reserves the right to require complete, certified copies of all required insurance policies, at any time.

**INDEMNIFICATION AGREEMENT**

**(To be submitted in within ten (10) days after receipt of Notice of Award)**

\_\_\_\_\_ agrees to defend, indemnify, save and hold Contractor/Subcontractor/Lessee/Supplier

harmless the Terrebonne Parish Consolidated Government their officers, , elected officials, agents, servants and employees, including volunteers (Indemnified Parties”) from and against any and all claims, demands, expense and liability arising out of injury or death to any person or the damage, loss or destruction of any property which may occur or in any way arise out of the \_\_\_\_\_ as provided herein, except those claims, Contractor/Subcontractor/Lessee/Supplier

demands and/or causes of action arising out of the sole negligence of the Indemnified Parties or their officers, agents, elected officials, servants and employees. \_\_\_\_\_ agrees to investigate, handle, and respond to any Contractor, Subcontractor, Lessee, Supplier

such lawsuit at its sole expense, including any expenses associated with the enforcement of this indemnity provision, and agrees to bear all costs and expenses related hereto, even if it (claims, etc) is groundless, false, or fraudulent.

Accepted By: \_\_\_\_\_  
Company Name  
\_\_\_\_\_  
Authorized Signature  
\_\_\_\_\_  
Title  
\_\_\_\_\_  
Date Accepted

Is Insurance Certificate Attached? \_\_\_\_\_

**Purpose of Bid:** 23-WHSE-11 (Re-Bid) Purchase of New/Unused Transformers

**AFFIDAVIT  
VERIFICATION OF CITIZENSHIP**

(to be submitted within 10 days from receipt of "Notice of Award")

**BEFORE ME**, the undersigned Notary Public, duly qualified in and for the Parish and State aforesaid, personally came and appeared:

\_\_\_\_\_  
(name)

who after being first duly sworn, deposed and said that:

1. I am the \_\_\_\_\_ of \_\_\_\_\_.  
(title) (company)

2. I swear that \_\_\_\_\_ is registered and participates in a status verification system  
(company)

to verify that all employees in the state of Louisiana are legal citizens of the United States or are legal aliens.

3. I verify that if \_\_\_\_\_ is awarded the contract, it shall continue, during the  
(company)

term of the contract, to utilize a status verification system to verify the legal status of all new employees in the state of Louisiana.

4. I acknowledge that \_\_\_\_\_ shall require all subcontractors to  
(company)

Submit to \_\_\_\_\_ a sworn affidavit verifying compliance with Paragraphs (2) and (3) of  
(company)  
the Affidavit.

Name: \_\_\_\_\_

Title: \_\_\_\_\_

Company: \_\_\_\_\_

**Sworn to and subscribed before me** at Houma, Louisiana,  
on this \_\_\_\_\_ day of \_\_\_\_\_ 20\_\_\_\_\_.

\_\_\_\_\_



**OFFICIAL BID FORM SECTION "B"**

(Must be completed and uploaded as an attachment with bid)

**The following material listing is for the insertion of Delivery Times ONLY. All pricing must be submitted via Central Auction House. Call 225-810-4814 for registration information Or Visit:**

<http://www.centrauctionhouse.com/rfp.php?cid=65>

Item No.	Quantity	UOM	Item Description	Insert Delivery Time here
1	6	Each	Junction Box 3 Phase Cabinet only Barfield 186030TP or equal	
2	3	Each	Junction Box Single Phase P12222032MD or equal	
3	6	Each	TRANSFORMER 15 KVA SINGLE PHASE POLEMOUNT 7970/13.8 120/240 OR EQUAL';	
4	20	Each	TRANSFORMER 25 KVA SINGLE PHASE POLEMOUNT 7970/13.8 120/240 OR EQUAL';	
5	9	Each	TRANSFORMER 25 KVA SINGLE PHASE POLEMOUNT 7970/13.8 277/480 OR EQUAL';	
6	12	Each	TRANSFORMER 25 KVA SINGLE PHASE POLEMOUNT 7970/13.8 120/208Y OR EQUAL';	
7	2	Each	TRANSFORMER 25 KVA SINGLE PHASE POLEMOUNT SUBSTATION 35000/19.9 120/240 OR EQUAL';	
8	20	Each	TRANSFORMER 50 KVA SINGLE PHASE POLEMOUNT 7970/13.8 120/240 OR EQUAL';	
19	3	Each	TRANSFORMER 50 KVA SINGLE PHASE POLEMOUNT 7970/13.8 120/208Y OR EQUAL';	
10	6	Each	TRANSFORMER 50 KVA SINGLE PHASE POLEMOUNT 7970/13.8 277/480 OR EQUAL';	
11	2	Each	TRANSFORMER 75 KVA SINGLE PHASE POLEMOUNT 7970/13.8 240/480 OR EQUAL';	
12	8	Each	TRANSFORMER 75 KVA SINGLE PHASE POLEMOUNT 7970/13.8 120/240 OR EQUAL';	
13	8	Each	TRANSFORMER 100 KVA SINGLE PHASE POLEMOUNT 7970/13.8 120/240V OR EQUAL';	
14	3	Each	TRANSFORMER 100 KVA SINGLE PHASE POLEMOUNT 7970/13.8 277/480 OR EQUAL';	
15	6	Each	TRANSFORMER 100 KVA SINGLE PHASE POLEMOUNT 7970/13.8 120/208Y OR EQUAL';	
16	30	Each	TRANSFORMER 100 KVA SINGLE PHASE PADMOUNT 7970/13.8 240/120 OR EQUAL';	
17	20	Each	TRANSFORMER 167 KVA SINGLE PHASE PADMOUNT 7970/13.8 120/240 OR EQUAL	
18	2	Each	TRANSFORMER 500 KVA THREE PHASE PADMOUNT 7970/13.8 120/208 OR EQUAL	
19	2	Each	TRANSFORMER 300 KVA THREE PHASE PADMOUNT 7970/13.8 120/208 OR EQUAL	

Company Name: \_\_\_\_\_

## Bidder's Check List

This checklist is for your guidance only and does not necessarily constitute each and every requirement of this bid. Please read the entire bid thoroughly to ensure that your submission is complete.

1. **Attachment(s) to be uploaded to Central Auction House at time of bidding:**

- Official Bid Form Section "A" completely filled out
- Official Bid Form Section "B" delivery times inserted

2. **Other documentation to be uploaded at time of bidding:**

- \*Signature Authorization: **(REQUIRED BY ALL BIDDERS )** Written evidence of the person signing the bid shall be submitted at the time of bidding, in accordance with LA R.S. 38:2212(B)(5)
  - Provide documentation stating that the person signing the bid is authorized to bind the company to the requirements of the bid/contract.
  - The documentation provided must be signed by a member of the company with authority as outlined on pages 3 and 4 of this document.
  - Failure to include the appropriate signature authorization shall result in rejection of the bid as non-responsive.

3. **Additional Documents** (to be submitted within 10 days from receipt of "Notice of Award"

- Indemnification Agreement
- Non-Collusion Affidavit
- Insurance Certificate
- Certification Regarding Lobbying
- Affidavit Verification of Citizenship (E-Verify)

**\*If you are unclear about the "signature authorization" or any other requirement, please do not hesitate to contact the Purchasing Office at 985-580-7272**

**DETAILED SPECIFICATIONS  
FOR  
THREE PHASE DISTRIBUTION TRANSFORMER – PAD MOUNT**

**I. GENERAL**

These specifications are intended to describe a transformer which will perform the functions described in these specifications and will be designed and constructed in accordance with the generally accepted engineering, manufacturing and operating practices observed in the electric utility industry. These transformers shall meet all requirements of the latest applicable American National Standard Institute (ANSI), American Society of Testing and Materials (ASTM), Institute of Electrical and Electronic Engineers (IEEE), and the National Electrical Manufacturers Association (NEMA) standards. These transformers shall be three-phase, 60 hertz, oil filled, self-cooled, compartmental, pad mount type distribution transformers, rated from 150kVA through 2,000kVA. The transformer oil must not contain PCBs.

**II. RATINGS**

These transformers shall be rated at 13,800GRDY/7,970 volts on the primary side. The BIL shall be 95kV on the primary side and 30kV on the secondary side. Transformer kVA ratings shall be 150, 300, 500, 750, and 1,000 for the 120/240, 208/120-volt class and 300, 500, 750, 1,000, 1,200, 1,500, and 2,000 for the 480/277-volt class as noted on the bid. KVA ratings are continuous and based on not exceeding either a 65-degree Centigrade average winding temperature rise, or an 80-degree Centigrade hot spot temperature rise above a 40-degree Centigrade ambient temperature. Transformer impedance shall be 5.75% ( $\pm 10\%$ ) for sizes 750 to 2,000 kVA. (Not specified for 75 to 500 kVA).

**III. CONSTRUCTION**

These transformers shall be provided with a five (5) legged wound core. Stacked cores will not be accepted. All transformers are to have four (4) 2-1/2" high voltage taps, 2 above and 2 below rated voltage. The tap changer shall be externally operable. A dead front design shall be utilized. The transformer tank and door(s) shall be of a tamper resistant design as per the latest Western Underground Committee Guide. The unit shall be suitable for mounting on a pad with no additional protective housing. There shall be no exposed screws, bolts, or other fastening devices, which may be externally removed. There shall be no opening through which foreign objects such as sticks, rods or wires might be inserted to contact live parts.

The termination compartment shall be divided into two sections that are separated by a metal barrier. The low voltage section shall be on the right side when facing the transformer. The transformer must be capable of being padlocked and it must have a

recessed captive one-half inch (1/2") penta-head bolt to further secure the unit. The tank shall be fabricated from a minimum of 12-gauge steel and the door(s) from 14-gauge, minimum. The door(s) must be easily removable, but only in the completely open position.

Construction of the unit shall be such that it can be lifted, skidded, and slid into place on the mounting pad without disturbing the entrance cables. The unit shall be provided with externally welded or bolted lifting flanges, so arranged to provide a balanced total transformer lift.

All transformers shall have a pressure relief valve that is rated for 15 PSI with a flow rate of 50 SCFM minimum as specified by ANSI. The valve shall vent into the terminating compartment. The valve shall have a retained pop-off cap to indicate that the valve has operated. The valve shall be a Beta 1750K-5 or equivalent. The transformer tank shall have two (2) one-half inch (1/2") tapped ground pads that are welded to the tank with a continuous seam. The pads shall be located below the high and low voltage bushings. Standard eyebolt grounding lugs shall be provided with the pads.

All three phase transformers shall have a one inch (1") drain valve with a built-in sampling device.

#### **IV. BUSHINGS**

The primary side of the transformer shall have six (6) 15kV load break, universal bushing wells and bushing inserts installed in a loop feed design. One-piece bushing wells/inserts are not acceptable. The bushing inserts must be compatible with either RTE or Elastimold load break elbow terminators. A terminator-parking stand shall be included between the high voltage bushings. Staggered required on low voltage bushing for three phase transformers.

The secondary side of the transformer shall have four (4) 600-volt bushings. The bushing shall consist of an epoxy insulator that is bolted to the tank front or a notched epoxy insulator that is held in place by a keyed, spade type connector, which extends from the tank. The bushings can be changed out without entering the tank. The bushings shall be made of tin-plated copper pads.

#### **V. TAPS**

All transformers shall have four (4) 2 1/2" high voltage taps, two (2) above and (2) below rated voltage. The tap changer shall be externally operable.

#### **VI. PAINTING**

All transformers shall be painted a Munsell green color in strict accordance with the latest Edison Electric Institute (EEI) guidelines for pad-mounted equipment. The contractor shall submit certification that these specifications have been met, upon request.

## **VII. FUSING**

A bayonet type transformer fuse shall be included. This fuse shall be externally removed. A drip shield shall be provided directly beneath the bayonet to prevent oil from falling on high voltage terminations. The transformer shall be fused with the appropriate fuse link.

## **VIII. DIMENSIONS**

The minimum secondary compartment cable opening shall be 24" wide by 19" deep. For other dimensions, see the attached diagram.

## **IX. IDENTIFICATION**

All transformers shall have the kVA size, in three-inch (3") letters, located on the front of the transformer door. Safety labels shall be affixed to the transformer in accordance with the latest NEMA specifications. The transformer shall have a nameplate in accordance with the ANSI/IEEE located on the inside compartment area that is visible when the compartment has all cables in place. The attached transformer warning label should also be affixed to the transformer prior to delivery.

Terminal designation shall be as defined by ANSI and shall be marked on the transformer tank.

## **X. TESTING**

Routine tests on all transformers shall be conducted as specified in ANSI/IEEE Standard C57.12.90-1993. Dielectric and impulse tests must be conducted as specified by ANSI/IEEE. A certified copy of actual test values shall be submitted on the transformer before shipment to: **Terrebonne Parish Consolidated Government, Attn. Electric Distribution Superintendent, 301 Plant Road, Houma, Louisiana 70363.** Test data shall include, but not necessarily be restricted to the following:

No load losses; Full load losses; Regulation at 100% power factor; Regulation at 80% power factor; Percent resistance; Percent impedance; Top oil temperature rise at full load.

## **XI. SHIPPING**

Transformers shall be shipped on individual pallets and secured with a banding strap connected to the lifting lugs. **Transformers shall be "side loaded" on flatbed truck or trailer. The flatbed truck or trailer shall permit unloading from sides and back. Box trailers shall be permitted; however, the vendor shall make provisions to conveniently place the transformers at the rear of the box trailer to allow customer unloading with forklift.**

## **XII. WARRANTY**

The manufacturer's warranty shall apply for one (1) year. The effective period of warranty shall commence when the purchaser installs the transformer, but the period from the time of receipt by the purchaser to the commencement of the warranty shall not exceed six (6) months.

**XIII. DATA**

Bidders shall provide the following upon request:

Manufacturer's specifications: detailed description and drawings, which shall include dimensions, size, capacity, weight, etc.; Guaranteed Test Data; Guaranteed Performance Data sheets.

**XIV. GUARANTEED PERFORMANCE DATA**

Bidders shall be required to submit all the Guaranteed Performance Data, for transformers they bid, as described below upon request.

**GUARANTEED PERFORMANCE DATA (DESCRIPTION):**

1. No load losses (watts) per transformer at rated voltage.
2. Total losses (watts) per transformer at rated voltage and current to 85 degrees Centigrade (total temperature).
3. Regulation at 100% power factor (%).
4. Regulation at 80% power factor (%).
5. Full load resistance on rated kVA base (%) corrected to 85 degrees C.
6. Full load reactance on rate kVA base (%).
7. Full load impedance on rated kVA base (%).
8. Temperature guarantee based on full load and ambient air temperature of 100 degrees F.
9. Net weight (lbs.)
10. Shipping weight (lbs.)
11. Exciting current at rated voltage (amps).

**TABLE 1**  
Three Phase Transformer Bay-o-net Fusing Chart

Transformer Size (kVA)	13.2 Fuse Catalog Number	24.9 kV Fuse Catalog Number	Manufacturer
150	4000358C08	4000358C05	RTE
300	4000358C10	4000358C10	RTE
500	4000385C12	4000358C10	RTE
750	4000358C14	4000358C12	RTE
1,000	4000358C14	4000358C12	RTE
1,200	4000358C14	4000358C12	RTE
1,500	4000358C16	4000358C12	RTE
2,000	4000358C16	N/A	RTE

NOTE: Alternate manufacturers must be truly equivalent to be acceptable

\*\*\*\*\*

**DETAILED SPECIFICATIONS  
FOR  
SINGLE PHASE DISTRIBUTION TRANSFORMER – PAD MOUNT**

**I. GENERAL**

These specifications are intended to describe a transformer which will perform the functions described in these specifications and will be designed and constructed in accordance with the generally accepted engineering, manufacturing and operating practices observed in the electric utility industry. These transformers shall meet all requirements of the latest applicable American National Standard Institute (ANSI), American Society of Testing and Materials (ASTM), Institute of Electrical and Electronic Engineers (IEEE), and the National Electrical Manufacturers Association (NEMA) standards. These transformers shall be single-phase, 60 hertz, oil filled, self-cooled, and compartmental, pad mount type distribution transformers, rated from 50kVA through 250kVA. The transformer oil must not contain PCBs.

**II. RATINGS**

These transformers shall be rated at 13,800 GRDY/7970 volts on the primary side 240/120 volts on the secondary side. The BIL shall be 95kV on the primary side and 30kV on the secondary side. Transformer KVA ratings shall be 50, 75, 100, 167, and 250 or as noted on the bid. KVA ratings are continuous and based on not exceeding either a 65-degree Centigrade average winding temperature rise, or an 80-degree Centigrade hot spot temperature rise above a 40-degree Centigrade ambient temperature. Maximum transformer impedance shall be 2.7%.

**III. CONSTRUCTION**

These transformers shall be a dead front design. The transformer tank and door(s) shall be of a tamper resistant design as per the latest Western Underground Committee Guide. The unit shall be suitable for mounting on a pad with no additional protective housing. There shall be no exposed screws, bolts, or other fastening devices, which may be externally removed. There shall be no opening through which foreign objects such as sticks, rods or wires might be inserted to contact live parts.

The transformer must be capable of being padlocked and it must have a recessed captive one-half inch (1/2") penta-head bolt to further secure the unit. The tank shall be fabricated from a minimum of 12-gauge steel and the door(s) from 14-gauge, minimum. The door(s) must be easily removable, but only in the completely open position. Construction of the unit shall be such that it can be lifted, skidded and slid into place on the mounting pad

without disturbing the entrance cables. The unit shall be provided with externally welded or bolted lifting flanges, so arranged to provide a balanced total transformer lift.

All transformers shall have a pressure relief valve that is rated for 15 p.s.i. with a flow rate of 50 SCFM minimum as specified by ANSI. The valve shall vent into the terminating compartment. The valve shall have a retained pop-off cap to indicate that the valve has operated. The valve shall be a Beta 1750K-5 or equivalent. The transformer tank shall have two (2) one-half inch (1/2") tapped ground pads that are welded to the tank with a continuous seam. The pads shall be located below the high and low voltage bushings. Standard eyebolt grounding lugs shall be provided with the pads.

#### **IV. BUSHINGS**

The primary side of the transformer shall have two (2) 15kV load break, universal bushing wells and bushing inserts installed in a loop feed design. One-piece bushing wells/inserts are not acceptable. The bushing inserts must be compatible with either RTE or Elastimold load break elbow terminators. A terminator-parking stand shall be included between the high voltage bushings.

The secondary side of the transformer shall have three (3) 600-volt bushings. The bushing shall consist of an epoxy insulator that is bolted to the tank front or a notched epoxy insulator that is held in place by a keyed, threaded stud which extends from the tank. A lock nut shall be provided on each secondary stud. Either a 5/8" or a 1" diameter stud is required. The stud shall be copper with a maximum 1.75" optimum stud protrusion. There shall be a minimum of 11-3/8" clearance between the end of the secondary stud and the transformer door in the closed position.

See attached drawing for bushing positioning and spacing.

#### **V. TAPS**

All transformers shall have four (4) 2 1/2" high voltage taps, two (2) above and two (2) below rated voltage 13,800/7970. The tap changer shall be externally operable.

#### **VI. PAINTING**

All transformers shall be painted a Munsell green color in strict accordance with the latest Edison Electric Institute (EEI) guidelines for pad-mounted equipment. The contractor shall submit certification that these specifications have been met, upon request.

#### **VII. FUSING**

A bayonet type transformer fuse shall be included. This fuse shall be externally removed. A drip shield shall be provided directly beneath the bayonet to prevent oil from falling on high voltage terminations. The transformer shall be fused with the appropriate fuse link as shown on Table 1.



### **VIII.DIMENSIONS**

The total outside front width shall be 36" maximum. The transformer depth shall be a maximum of 38" for 25-75 kVA sizes and 42" for 100-250 kVA sizes (167 kVA and below radiator fins not acceptable). The termination compartment shall be a minimum of 15" deep. The base sill flange shall be ¾ inch minimum to 1-1/2 inches maximum from the outside walls.

### **IX.IDENTIFICATION**

All transformers shall have the kVA size, in three-inch (3") letters, located on the front of the transformer door. Safety labels shall be affixed to the transformer in accordance with the latest NEMA specifications. The transformer shall have a nameplate in accordance with the ANSI/IEEE located on the inside compartment area that is visible when the compartment has all cables in place. Terminal designation shall be as defined by ANSI and shall be marked on the transformer tank. The attached transformer warning label should also be affixed to the transformer prior to delivery.

### **X.TESTING**

Routine tests on all transformers shall be conducted as specified in ANSI/IEEE Standard C57.12.90-1993. Dielectric and impulse tests must be conducted as specified by ANSI/IEEE. A certified copy of actual test values shall be submitted on the transformer before shipment to: **Terrebonne Parish Consolidated Government, Attn. Electric Distribution Superintendent, 301 Plant Road, Houma, Louisiana 70363.** Test data shall include, but not necessarily be restricted to the following:

No load losses; Full load losses; Regulation at 100% power factor; Regulation at 80% power factor; Percent resistance; Percent impedance; Top oil temperature rise at full load.

### **XI. SHIPPING**

Transformers shall be shipped on individual pallets and secured with a banding strap connected to the lifting lugs. **Transformers shall be "side loaded" on flat bed truck or trailer. The flat bed truck or trailer shall permit unloading from sides and back. Box trailers shall be permitted; however, the vendor shall make provisions to conveniently place the transformers at the rear of the box trailer to allow customer unloading with forklift.**

### **XII. WARRANTY**

The manufacturer's warranty shall apply for one (1) year. The effective period of warranty shall commence when the purchaser installs the transformer, but the period from the time of receipt by the purchaser to the commencement of the warranty shall not exceed six (6) months.

**XIII.DATA**

Bidders shall provide the following upon request:

Manufacturer’s specifications: detailed description and drawings, which shall include dimensions, size, capacity, weight, etc.; Guaranteed Test Data; Guaranteed Performance Data sheets.

**XIV. GUARANTEED PERFORMANCE DATA**

Bidders shall be required to submit all the Guaranteed Performance Data, for transformers they bid, as described below upon request

**GUARANTEED PERFORMANCE DATA (DESCRIPTION)**

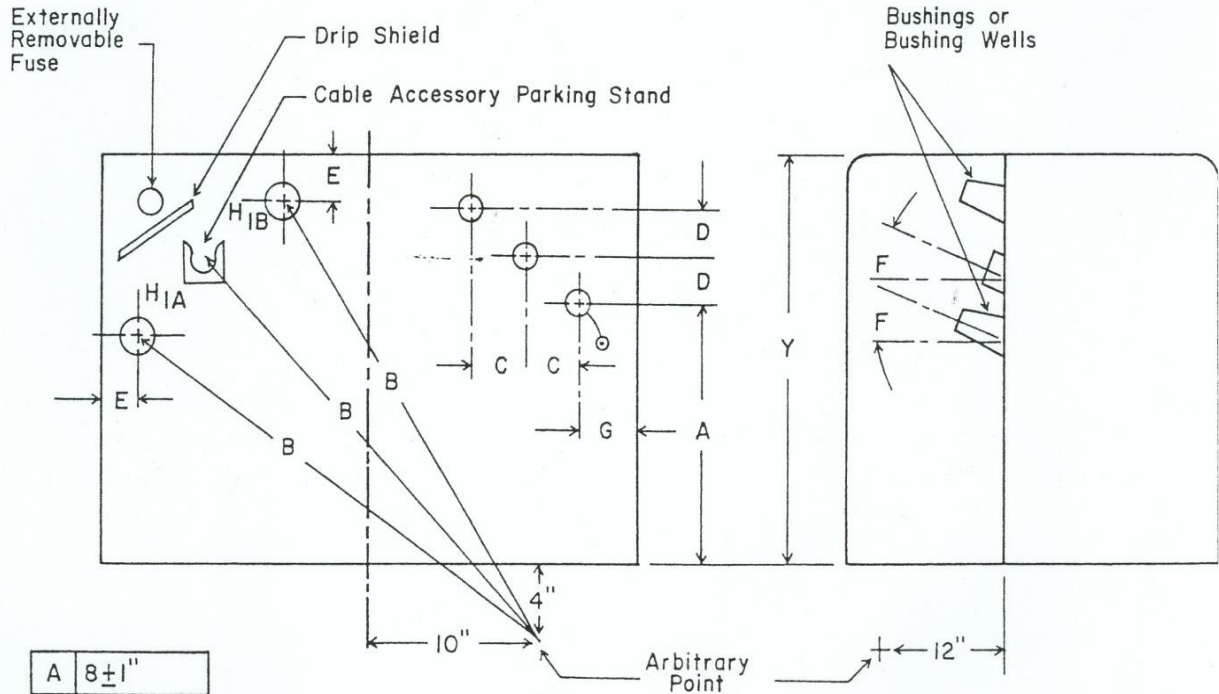
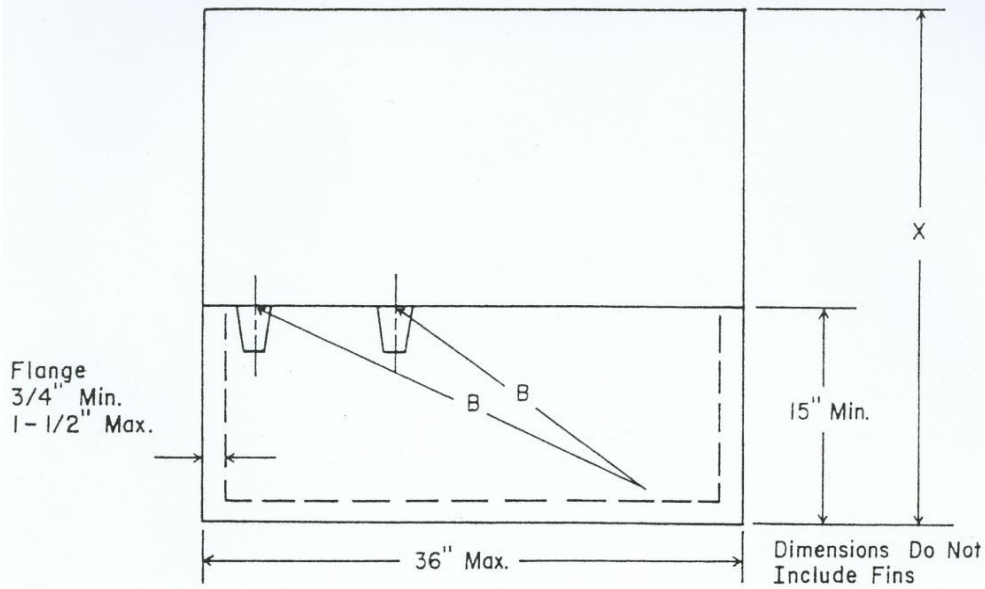
1. No load losses (watts) per transformer at rated voltage.
2. Total losses (watts) per transformer at rated voltage and current to 85 degrees Centigrade (total temperature).
3. Regulation at 100% power factor (%).
4. Regulation at 80% power factor (%).
5. Full load resistance on rated kVA base (%) corrected to 85 degrees C.
6. Full load reactance on rate kVA base (%).
7. Full load impedance on rated kVA base (%).
8. Temperature guarantee based on full load and ambient air temperature of 100 degrees F.
9. Net weight (lbs.)
10. Shipping weight (lbs.)
11. Exciting current at rated voltage (amps).

TABLE 1  
Single Phase Transformer Bay-o-net Fusing Chart

Transformer Size (kVA)	13.8 Fuse Catalog Number	24.9 kV Fuse Catalog Number	Manufacturer
50	4000358C08	4003528C05	RTE
75	4000358C08		RTE
100	4000358C10	4000358C08	RTE
167	4000358C12	4000358C10	RTE
250	4000385C14	N/A	RTE

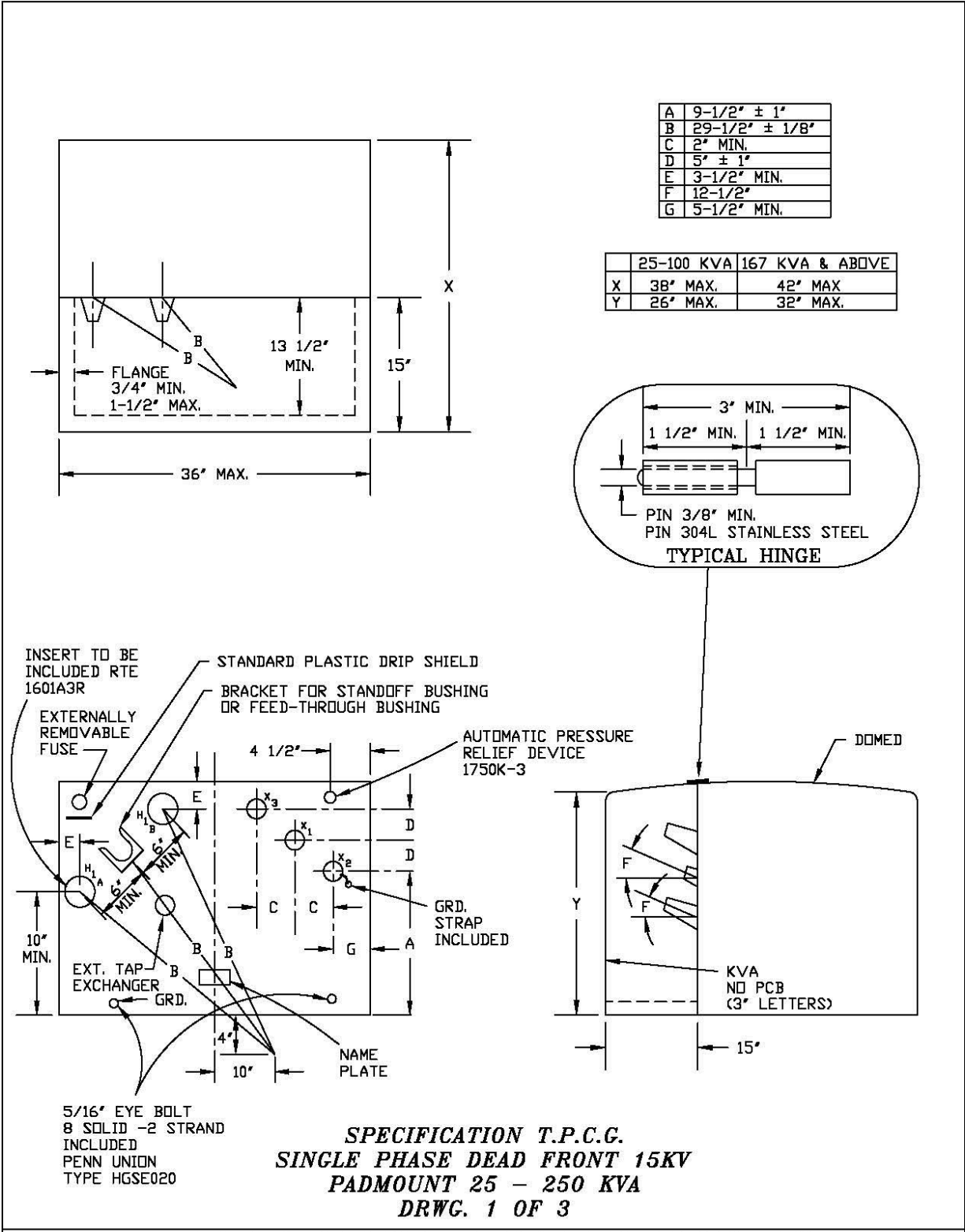
NOTE: Alternate manufacturers must be truly equivalent to be acceptable

SINGLE PHASE PADMOUNT  
TRANSFORMER SPECIFICATIONS



A	8 ± 1"
B	29 1/2 ± 1"
C	2" Min.
D	5 ± 1"
E	3 1/4" Min.
F	12 1/2°
G	3 1/2" Min.

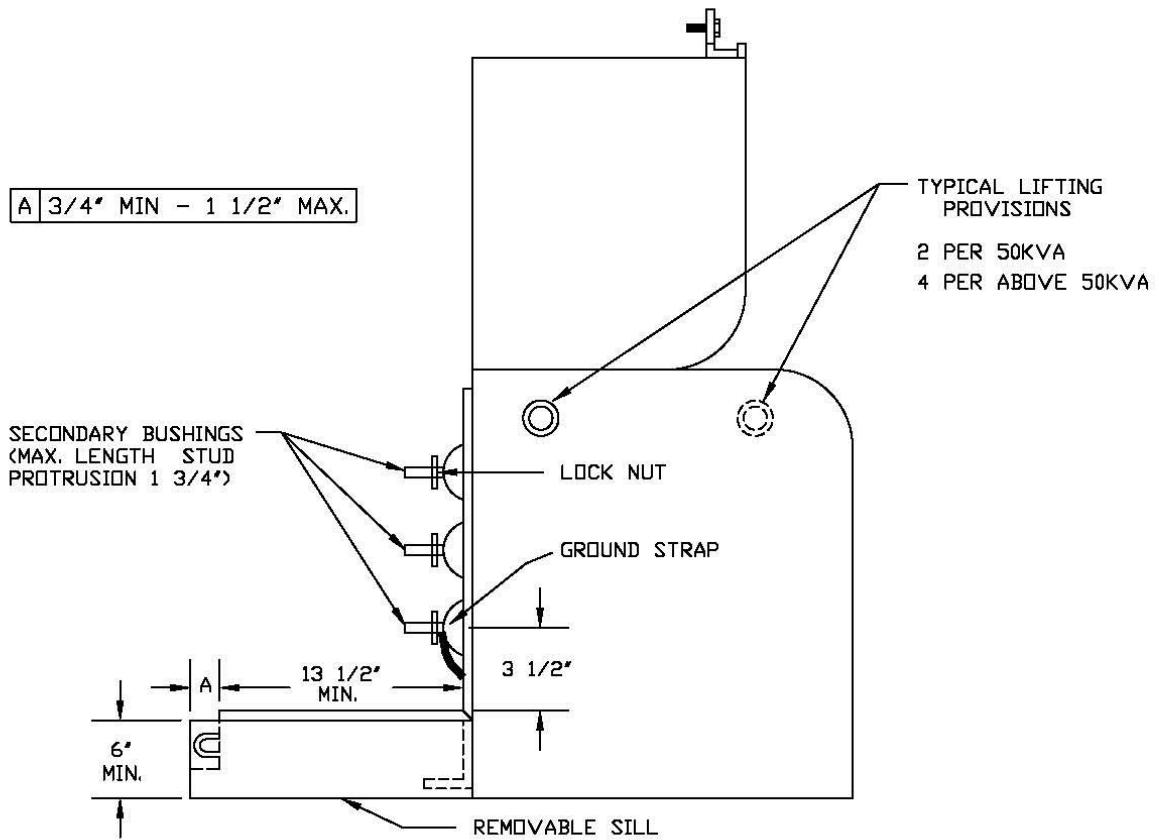
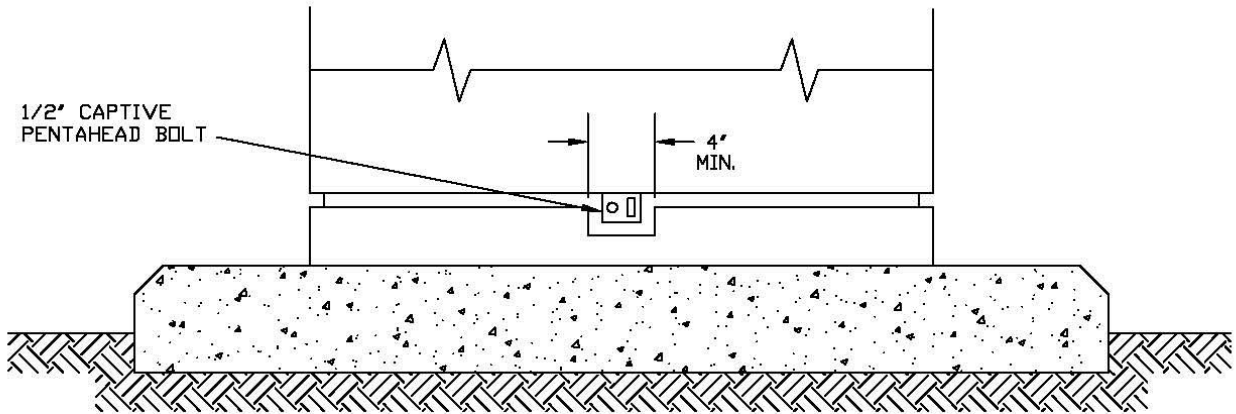
	25 - 75 KVA	100 - 167 KVA
X	38" Max.	42" Max.
Y	24" Max.	32" Max.



**SPECIFICATION T.P.C.G.  
SINGLE PHASE DEAD FRONT 15KV  
PADMOUNT 25 - 250 KVA  
DRWG. 1 OF 3**

TERREBONNE PARISH CONSOLIDATED GOVERNMENT

DATE: 1-11-1994	REVISED DATE: 7-31-2019	CHK. BY: DNT	APP. BY:
-----------------	-------------------------	--------------	----------

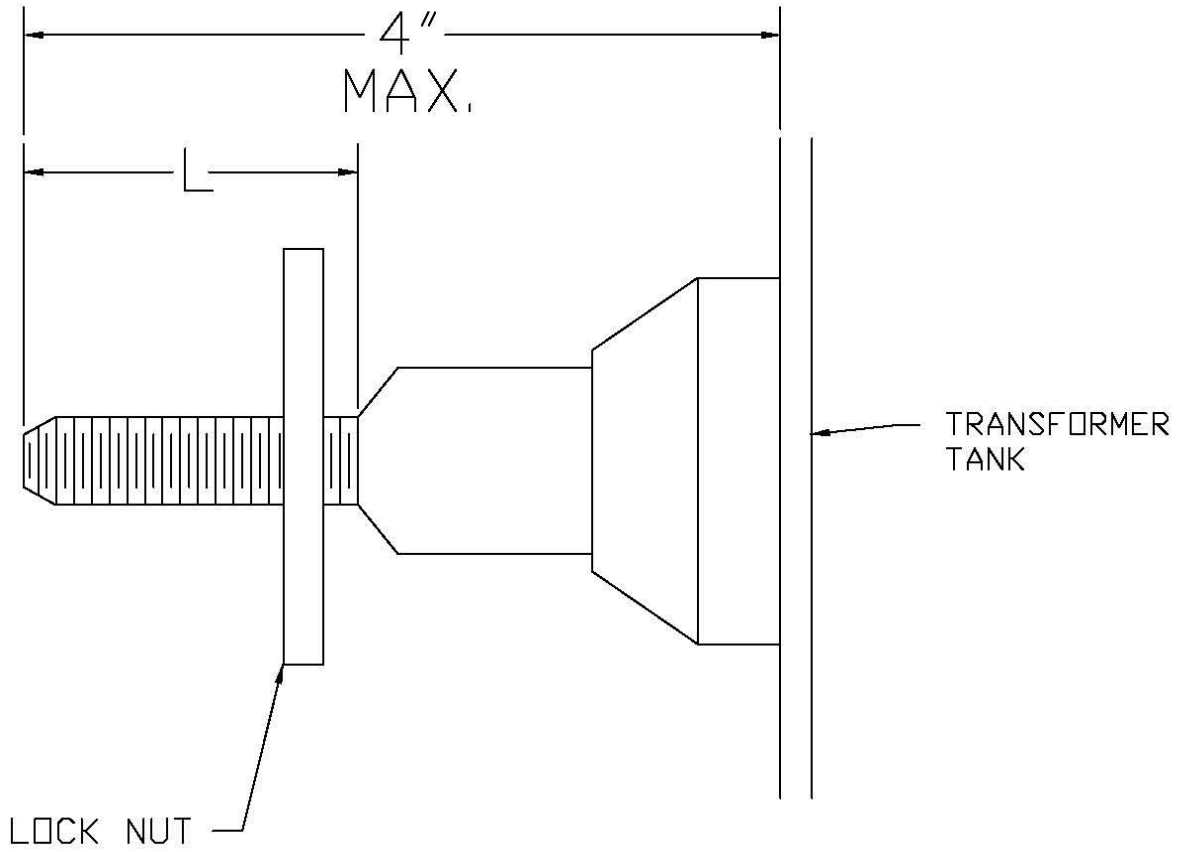


**SPECIFICATION T.P.C.G.  
SINGLE PHASE DEAD FRONT 15KV  
PADMOUNT 25 - 250 KVA  
DRWG. 2 OF 3**

TERREBONNE PARISH CONSOLIDATED GOVERNMENT

DATE: 1-11-1994	REVISED DATE: 7-31-2019	CHK. BY: DNT	APP. BY:
-----------------	-------------------------	--------------	----------

KVA	THREAD SIZE	MAX. L
25-75	0.625-11UNC-2A	1.75
100-167	1.000-14UNC-2A	1.75



LOW VOLTAGE COPPER STUD  
TERMINAL DETAILS

**SPECIFICATION T.P.C.G.**  
**SINGLE PHASE DEAD FRONT 15KV**  
**PADMOUNT 25 - 250 KVA**  
**DRWG. 3 OF 3**

TERREBONNE PARISH CONSOLIDATED GOVERNMENT

DATE: 1-11-1994 | REVISED DATE: 7-31-2019 | CHK. BY: DNT | APP. BY:

**DETAILED SPECIFICATIONS  
FOR  
SINGLE PHASE DISTRIBUTION TRANSFORMER – POLE MOUNT**

**I. GENERAL**

These specifications are intended to describe a transformer which will perform the functions described in these specifications and will be designed and constructed in accordance with the generally accepted engineering, manufacturing and operating practices observed in the electric utility industry. These transformers shall meet all requirements of the latest applicable American National Standard Institute (ANSI), American Society of Testing and Materials (ASTM), Institute of Electrical and Electronic Engineers (IEEE), and the National Electrical Manufacturers Association (NEMA) standards. These transformers shall be single-phase, 60 hertz, oil filled, self-cooled, overhead type distribution transformers, rated from 15kVA through 167kVA. The transformer oil must not contain PCBs.

**II. RATINGS**

These transformers shall be rated at 13,800/7970 volts on the primary side and either (A) 120/240 volts, (B) 240/480 volts, (C) 277 volts, or (D) 208/120 on the secondary side. The BIL shall be 95kV on the primary side and 30kV on the secondary side. Transformer kVA ratings shall be 15, 25, 50, 75, 100, 167 and 250. KVA ratings are continuous and based on not exceeding either a 65-degree Centigrade average winding temperature rise, or an 80-degree Centigrade hot spot temperature rise above a 40-degree Centigrade ambient temperature. Maximum transformer impedance shall be 2.7%.

**III. SIZE LIMITATIONS**

The transformers shall be limited in size as follows:

SIZE	WEIGHT (lbs)	HEIGHT	TANK DIAMETER
25 kVA	450	39"	23"
50 kVA	750	47"	25"
75 kVA	1025	49"	33"
100 kVA	1175	49"	36"
167 kVA	1475	52"	39"
250 KVA	2055	46"	26"

**IV. PAINTING**

All transformers shall be thoroughly cleaned and painted with rust resistant primary coat and a finishing topcoat. The tank exterior shall be light gray in color with a minimum coating of 3 mils. The interior shall have at least a 1-mil primer coating from the top of the

tank to at least the low oil level. The latest ANSI specifications for transforming painting must be followed.

#### **V. BUSHINGS**

The transformers shall have bushings as per ANSI. There shall be two (2) high voltage bushings mounted on the top cover and three (3) low voltage bushings mounted on the side (except as noted in the ANSI specification). The primary bushing shall be light gray colored porcelain. There shall be provisions for connecting the low voltage side for straight 120-volt operation on the 120/240-volt type secondary. In the event only single bushing transformers are available from stock, the purchaser reserves the right to accept these. The secondary eyebolt connection for 100 kVA and larger transformers shall be able to accommodate 4/0 AWG to 500 MCM wire.

#### **VI. TAPS**

All transformers shall have four (4) 2 ½" high voltage taps, two (2) above and two (2) below rated voltage. The tap changer shall be externally operable.

#### **VII. ACCESSORIES**

All transformers shall be supplied with a pressure relief valve. All valves shall be rated at 15 p.s.i. with a flow rate of 50 SCFM minimum. The valve shall be provided with a red cap, which will pop off to indicate the valve has operated. The cap will be retained by a short length of chain connected to the valve to prevent loss. The pressure relief valve shall be a Beta 1712K-1 or equivalent.

Each transformer shall have a tank-grounding lug attached to it. An eyebolt grounding connector is preferred. The tank cover shall be electrically grounded to the tank.

Each transformer will have two (2) lifting lugs and two (2) NEMA mounting brackets.

Each transformer shall have a nameplate attached to it in accordance with ANSI/IEEE standards. The kVA size shall be indicated on the transformer tank with three-inch (3") numbers that will be visible from the ground. The secondary voltage shall be indicated on the transformer tank with 3" number directly below the kVA size. Each transformer shall have a sticker on the tank indicating that it is non-PCB.

For all pole-mounted transformers the following shall be provided.

- 1.) Mounting lugs for distribution class surge arresters shall be supplied for each high voltage bushing. Lugs shall be two (2) ½" 13 NC tapped holes, 7/16" deep, spaced vertically center-to-center. Center to center lug spacing shall be 2-1/2". Top lug shall be 4" from upper tank lip. Threads shall be protected by a corrosion resistant flanged cup pressed into the threaded opening.



- 2.) A 10kv distribution class surge arrester shall be mounted on the lugs specified above. The arrester shall be mounted on the H1 primary side. The same insulator cap, suitable for protecting the terminals from wildlife, shall be mounted over the surge arrester's high voltage terminal and the transformer's H1 primary insulator bushing. Approved surge arresters are as follows:

Cooper Power Systems – catalogue number UNS10050A1A1A1A

Joslyn – catalogue number ZNP-010-000100

Ohio Brass – catalogue number 217259-7314

Other surge arresters may be provided on the following conditions.

- a.) The surge arrester must be truly equal.
- b.) The surge arrester must be approved by the Material Standards Committee prior to bid opening.

Approved insulator caps are as follows:

Custom Plastics – catalogue number CPWP275

Howard Industries – catalogue number 2163

Other insulator caps may be provided on the following conditions.

- a.) The insulator cap must be truly equal.
- b.) The insulator cap must be approved by the Material Standards Committee prior to bid opening.

- 3.) A jumper wire(s) shall be supplied and connected as follows:

- a.) **The wire(s) shall be #4 AWG solid copper with 110 mils high-density polyethylene insulation (Transformer Riser Wire).** The wire(s) shall be designed for use as high voltage transformer leads.
- b.) A connection is to be made with said wire from the transformer high voltage terminal (H1) to the surge arrester's high voltage terminal.
- c.) An additional length of said wire is to extend 72" from the surge arrester high voltage connection. This wire is to be used as a jumper to the circuit phase wire when the transformer is installed. The insulation shall be stripped on the free end a distance suitable for attaching to cutout. The wire(s) and surge arrester shall be secured suitable for shipping.
- d.) **No eye or spade terminals will be accepted. Wire is to be connected directly.**

### VIII. TESTING

Routine tests on all transformers shall be conducted as specified in ANSI/IEEE Standard C57.12.90-1993. Dielectric and impulse tests must be conducted as specified by ANSI/IEEE. A certified copy of actual test values shall be submitted on the transformer before shipment to: **Terrebonne Parish Consolidated Government, Attn. Electric Distribution Superintendent, 301 Plant Road, Houma, Louisiana 70363.** Test data shall include, but not necessarily be restricted to the following:

No load losses; Full load losses; Regulation at 100% power factor; Regulation at 80% power factor; Percent resistance; Percent impedance; Top oil temperature rise at full load.

#### **IX. SHIPPING**

Transformers shall be shipped on individual pallets and secured with a banding strap connected to the lifting lugs. Transformers shall be “side loaded” on flatbed truck or trailer. The flatbed truck or trailer shall permit unloading from sides and back. **Box trailers shall be permitted; however, the vendor shall make provisions to conveniently place the transformers at the rear of the box trailer to allow customer unloading with forklift.**

#### **X. WARRANTY**

The manufacturer’s warranty shall apply for one (1) year. However, the effective period of warranty shall commence when the purchaser installs the transformer, but the period from the time of receipt by the purchaser to the commencement of the warranty shall not exceed six (6) months.

#### **XI. DATA**

Bidders shall include the following upon request.

Manufacturer’s specifications: detailed description and drawings, which shall include dimensions, size, capacity, weight, etc.; Guaranteed Test Data; Guaranteed Performance Data sheets.

#### **XII. GUARANTEED PERFORMANCE DATA**

Bidders shall be required to submit all the Guaranteed Performance Data, for the transformers they bid on, as described below upon request.

##### **GUARANTEED PERFORMANCE DATA (DESCRIPTION)**

1. No load losses (watts) per transformer at rated voltage.
2. Total losses (watts) per transformer at rated voltage and current to 85 degrees Centigrade (total temperature).
3. Regulation at 100% power factor (%).
4. Regulation at 80% power factor (%).
5. Full load resistance on rated kVA base (%) corrected to 85 degrees C.
6. Full load reactance on rated kVA base (%).
7. Full load impedance on rated kVA base (%).
8. Temperature guarantee based on full load and ambient air temperature of 100 degrees F.
9. Net weight (lbs.)
10. Shipping weight (lbs.)
11. Distance from the front of the tank to the hanger, depth (in.).
12. Diameter of the tank (in.).
13. Overall height, to the top of the bushings (in.).

\*\*\*\*\*

**DETAILED SPECIFICATIONS  
FOR  
SINGLE PHASE DISTRIBUTION TRANSFORMER – POLE MOUNT**

**I. GENERAL**

These specifications are intended to describe a transformer which will perform the functions described in these specifications and will be designed and constructed in accordance with the generally accepted engineering, manufacturing and operating practices observed in the electric utility industry. These transformers shall meet all requirements of the latest applicable American National Standard Institute (ANSI), American Society of Testing and Materials (ASTM), Institute of Electrical and Electronic Engineers (IEEE), and the National Electrical Manufacturers Association (NEMA) standards. These transformers shall be single-phase, 60 hertz, oil filled, self-cooled, overhead type distribution transformers, rated from 15kVA through 25kVA. The transformer oil must not contain PCBs. All transformers are to be Additive Polarity.

**II. RATINGS**

These transformers shall be rated at 19920/34500 volts on the primary side and 120/240 volts on the secondary side. The BIL shall be 150 kV on the primary side and 30kV on the secondary side. Transformer kVA ratings shall be 15 thru 25. KVA ratings are continuous and based on not exceeding either a 65-degree Centigrade average winding temperature rise, or an 80-degree Centigrade hot spot temperature rise above a 40-degree Centigrade ambient temperature. Maximum transformer impedance shall be 2.7%.

**III. SIZE LIMITATIONS**

The transformers shall be limited in size as follows:

SIZE	WEIGHT (lbs)	HEIGHT	TANK DIAMETER
15 kVA	450	39"	23"
25 kVA	450	39"	23"

**IV. PAINTING**

All transformers shall be thoroughly cleaned and painted with rust resistant primary coat and a finishing topcoat. The tank exterior shall be light gray in color with a minimum coating of 3 mils. The interior shall have at least a 1-mil primer coating from the top of the tank to at least the low oil level. The latest ANSI specifications for transforming painting must be followed.

### **XIII. BUSHINGS**

The transformers shall have bushings as per ANSI. There shall be two (2) high voltage bushings mounted on the top cover and three (3) low voltage bushings mounted on the side (except as noted in the ANSI specification). The primary bushing shall be light gray colored porcelain. There shall be provisions for connecting the low voltage side for straight 120-volt operation on the 120/240-volt type secondary. In the event only single bushing transformers are available from stock, the purchaser reserves the right to accept these.

### **XIV. TAPS**

All transformers shall have four (4) 2 ½" high voltage taps, two (2) above and two (2) below rated voltage. The tap changer shall be externally operable.

### **XV. ACCESSORIES**

All transformers shall be supplied with a pressure relief valve. All valves shall be rated at 15 p.s.i. with a flow rate of 50 SCFM minimum. The valve shall be provided with a red cap, which will pop off to indicate the valve has operated. The cap will be retained by a short length of chain connected to the valve to prevent loss. The pressure relief valve shall be a Beta 1712K-1 or equivalent.

Each transformer shall have a tank-grounding lug attached to it. An eyebolt grounding connector is preferred. The tank cover shall be electrically grounded to the tank.

Each transformer will have two (2) lifting lugs and two (2) NEMA mounting brackets.

Each transformer shall have a nameplate attached to it in accordance with ANSI/IEEE standards. The kVA size shall be indicated on the transformer tank with three-inch (3") numbers that will be visible from the ground. The secondary voltage shall be indicated on the transformer tank with 3" number directly below the kVA size. Each transformer shall have a sticker on the tank indicating that it is non-PCB.

For all pole-mounted transformers the following shall be provided.

- 4.) Mounting lugs for distribution class surge arresters shall be supplied for each high voltage bushing. Lugs shall be two (2) ½" 13 NC tapped holes, 7/16" deep, spaced vertically center-to-center. Center to center lug spacing shall be 2-1/2". Top lug shall be 4" from upper tank lip. Threads shall be protected by a corrosion resistant flanged cup pressed into the threaded opening.
- 5.) A 27kv distribution class surge arrester shall be mounted on the lugs specified above. The arrester shall be mounted on the H1 primary side. The same insulator cap, suitable for protecting the terminals from wildlife, shall be mounted over the surge arrester's high voltage terminal and the transformer's H1 primary insulator bushing. Approved surge arresters are as follows:  
Joslyn – catalogue number ZNP-027-000100

Other surge arresters may be provided on the following conditions.

- a.) The surge arrester must be truly equal.
- b.) The surge arrester must be approved by the Material Standards Committee.

Approved insulator caps are as follows:

Custom Plastics – catalogue number CPWP275

Howard Industries – catalogue number 2163

Other insulator caps may be provided on the following conditions.

- c.) The insulator cap must be truly equal.
- d.) The insulator cap must be approved by the Material Standards Committee.

6.) A jumper wire(s) shall be supplied and connected as follows:

- e.) **The wire(s) shall be #4 AWG solid copper with 110 mils high-density polyethylene insulation (Transformer Riser Wire).** The wire(s) shall be designed for use as high voltage transformer leads.
- f.) A connection is to be made with said wire from the transformer high voltage terminal (H1) to the surge arrester's high voltage terminal.
- g.) An additional length of said wire is to extend 72" from the surge arrester high voltage connection. This wire is to be used as a jumper to the circuit phase wire when the transformer is installed. The insulation shall be stripped on the free end a distance suitable for attaching to cutout. The wire(s) and surge arrester shall be secured suitable for shipping.
- h.) **No eye or spade terminals will be accepted. Wire is to be connected directly.**

#### **XVI. TESTING**

Routine tests on all transformers shall be conducted as specified in ANSI/IEEE Standard C57.12.90-1993. Dielectric and impulse tests must be conducted as specified by ANSI/IEEE. A certified copy of actual test values shall be submitted on the transformer before shipment to: **Terrebonne Parish Consolidated Government, Attn. Electric Distribution Superintendent, 301 Plant Road, Houma, Louisiana 70363.** Test data shall include, but not necessarily be restricted to the following:

No load losses; Full load losses; Regulation at 100% power factor; Regulation at 80% power factor; Percent resistance; Percent impedance; Top oil temperature rise at full load.

#### **XVII. SHIPPING**

Transformers shall be shipped on individual pallets and secured with a banding strap connected to the lifting lugs. Transformers shall be "side loaded" on flatbed truck or trailer. The flatbed truck or trailer shall permit unloading from sides and back. **Box trailers shall be**

**permitted; however, the vendor shall make provisions to conveniently place the transformers at the rear of the box trailer to allow customer unloading with forklift.**

#### **XVIII. WARRANTY**

The manufacturer's warranty shall apply for one (1) year. However, the effective period of warranty shall commence when the purchaser installs the transformer, but the period from the time of receipt by the purchaser to the commencement of the warranty shall not exceed six (6) months.

#### **XIX. DATA**

Bidders shall provide the following upon request:

Manufacturer's specifications: Detailed description and drawings, which shall include dimensions, size, capacity, weight, etc.; Guaranteed Test Data; Guaranteed Performance Data sheets.

#### **XX. GUARANTEED PERFORMANCE DATA**

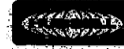
Bidders shall be required to submit all the Guaranteed Performance Data for the transformers they bid as described below upon request.

##### **GUARANTEED PERFORMANCE DATA (DESCRIPTION)**

1. No load losses (watts) per transformer at rated voltage.
2. Total losses (watts) per transformer at rated voltage and current to 85 degrees Centigrade (total temperature).
3. Regulation at 100% power factor (%).
4. Regulation at 80% power factor (%).
5. Full load resistance on rated kVA base (%) corrected to 85 degrees C.
6. Full load reactance on rate kVA base (%).
7. Full load impedance on rated kVA base (%).
8. Temperature guarantee based on full load and ambient air temperature of 100 degrees F.
9. Net weight (lbs.)
10. Shipping weight (lbs.)
11. Distance from the front of the tank to the hanger, depth (in.).
12. Diameter of the tank (in.).
13. Overall height, to the top of the bushings (in.)

P1222032 MD

29-500

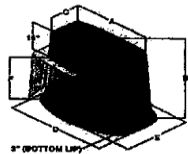


**Powerglass® Primary Voltage Sectionalizing Cabinets**

**TABLE 1**  
Sizing Chart

Model No.	Old Model No.	Width at Top	Overall Height	Depth at Top	Width at Base	Depth at Base	Suggested Depth Below Grade	Weight
<b>Single Phase</b>								
P1322039WD	SPM-220-31-WG-DF3	22	32-3/8	20	33	33	12	70
P1322039WD	SPM-320-31-WG-DF3	32	32-3/4	20	43	34	14	85
P1322039WD	SPM-320-37-WG-DF3	32	38-3/4	20	44	35	20	90
P1322043WD	SPM-320-37-4D-WG-DF3	32	38-3/4	24	44	36	20	110
P1322043WD	SPM-320-41-WG-DF3	32	43	20	45	36	24	105
P1322048WD	SPM-320-47-WG-DF3	32	48-3/8	20	45	38	29	125
P1422535WD	SPM-420-31-WG-DF3 (A)	42	31-1/2	25	53	42	13	105
P1422542WD	SPM-420-41-WG-DF3 (A)	42	41-1/2	25	55	45	23	145
P1422550WD	SPM-420-47-WG-DF3 (A)	42	49-1/2	25	56	47	31	175
<b>Three Phase</b>								
P3542541WD	SPM-540-38-WG-DF3	54	41	25	66	42	22	130
P3543141WD	SPM-540-38-8D-WG-DF3	54	41	31	66	48	22	145
P3542548WD	SPM-540-47-WG-DF3	54	49-1/2	25	68	45	31	160
P3543148WD	SPM-540-47-8D-WG-DF3	54	49-1/2	31	68	51	31	180
P3542555WD	SPM-540-63-WG-DF3	54	55-1/2	25	69	47	37	200
P3543155WD	SPM-540-63-8D-WG-DF3	54	55-1/2	31	69	53	37	215
P3673146WD	SPM-670-38-WG-DF3 (B)	67	46	31	80	46	37	205
P3673153WD	SPM-670-47-WG-DF3 (B)	67	55	31	82	50	38	220
P3673161WD	SPM-670-53-WG-DF3 (B)	67	61	31	83	52	42	240

- (a) 35 kV single phase switching pedestal for Elastimold junctions  
 (b) 35 kV three phase switching pedestal for Elastimold junctions.  
 Note:  
 1) For 35 kV applications, please change the no.'s. to P1422531500, P1422541500 and P1422548500 or P3673146500, P3673155500 or P3673161500 if RTE™ junctions are to be used.  
 2) If variations in any of these dimensions are desired, please contact factory.  
 3) Willow green "W" part numbers illustrated.



**Figure 5.**  
See above table.

**SPECIFICATIONS**  
**Pedestals**

The fiberglass pedestal shall be constructed to meet or exceed requirements of ANSI C 57.12.28 Standards for Pad-mounted Equipment Enclosure Integrity, an attachment to ANSI C 37.72. Conforms to REA requirements.

**Raw Material**

A. Resins - Resins shall be thermo-

setting, medium reactivity, rigid fire resistant polyester containing a maximum monomer content of 42% and a maximum of 1% Thixotropic additive.  
 B. Glass Fiber - Glass fiber reinforcement shall be K filament type E Borosilicate glass having high performance chrome-complex or silane finish compatible with polyester resin.  
 C. Gelcoat - Exterior surface coating shall be ultraviolet light stabilized, weather resistant, polyester base containing fade resistant color pigments, and such inert extenders as are appropriate to maintain total pigment volume concentration less than 20%.  
 D. Interior Coating - Interior laminate coating when required shall be a pigmented heat resistant high gloss polyester base surfacing sealer.  
 E. Other material - Organic peroxide catalysts and promoters appropriate to the resin type shall be used as necessary to provide thorough cure.

**Figure 6.**  
Low profile-minimum 19" above grade.

**Standards**

Structural Standards - Minimum structural standards of the finished laminate shall be as follows:

- Tensile Strength; ASTM D-638 8,180
- Flexural Properties; ASTM-D790 6,040
- Tangent Modules of Elasticity 407.3
- Compressive Strength; ASTM D-695 19,350
- Water Absorption; ASTM D570-59aT 5%
- Charpy Impact Test; ASTM D-256 3.0
- Impact Resistance; ASTM D-244 37.5
- Flammability Tests; ASTM D-635 Self Extinguishing
- Ultraviolet Protection Nominal .014" Gelcoat

**Construction**

- A. Construction details and overall dimensions shall be in accordance with the drawings.
- B. All exterior gelcoat shall be applied to produce a cured film of .014" plus or minus 0.005" in thickness. Distribution of glass reinforcement shall be uniform except that in areas of stress concentration where local reinforcement shall be required.
- C. All parts shall be molded in one piece. No wood reinforcement shall be used.
- D. Latching provisions shall result in snug fit of top to bottom, with means provided for padlock and pent bolt. All door and exterior hardware shall be constructed of 304 stainless steel, 6061-T6 aluminum, and/or ABD bronze casting.